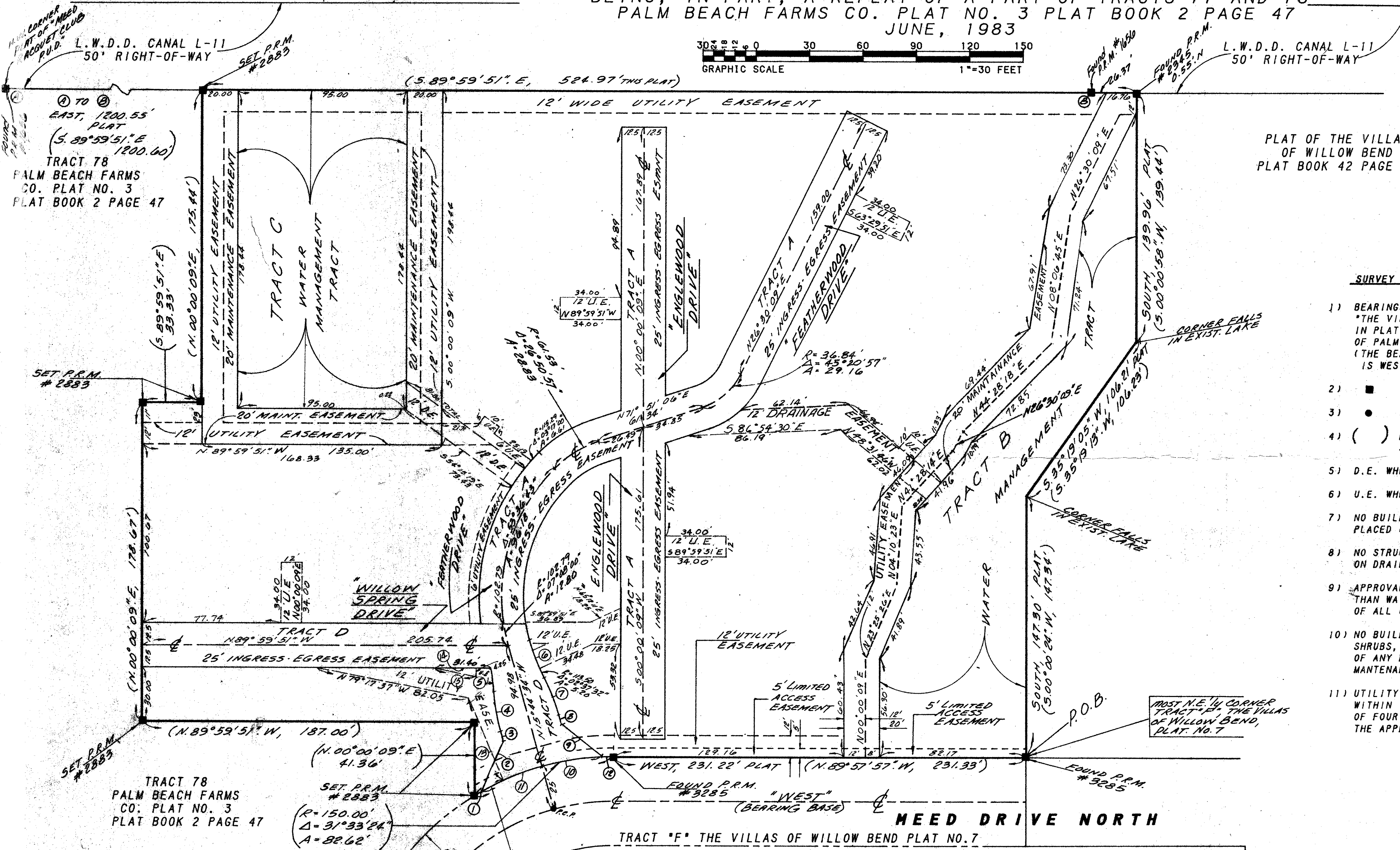
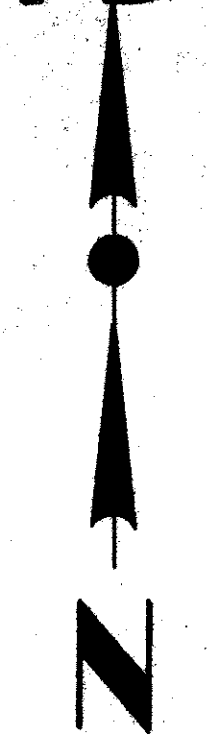
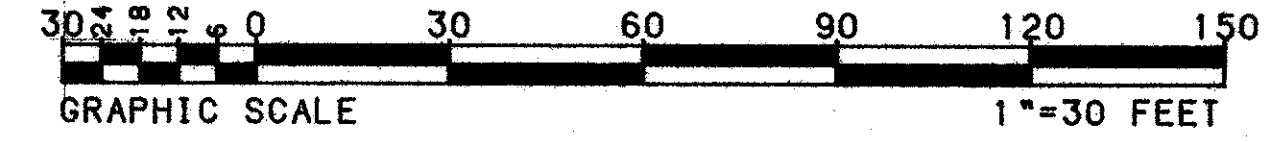


46/114

THE GARDENS OF WILLOW BEND PLAT NO. VIII

114

BEING THE EIGHTH PLAT OF MEED RACQUET CLUB P.U.D.
SECTION 21, TOWNSHIP 44 SOUTH, RANGE 42 EAST
PALM BEACH COUNTY, FLORIDA
BEING, IN PART, A REPLAT OF A PART OF TRACTS 77 AND 78
PALM BEACH FARMS CO. PLAT NO. 3 PLAT BOOK 2 PAGE 47
JUNE, 1983



PLAT OF THE VILLAS
OF WILLOW BEND
PLAT BOOK 42 PAGE 96

SURVEY NOTES:

- 1) BEARINGS AS SHOWN HEREON ARE IN THE MERIDIAN OF "THE VILLAS OF WILLOW BEND PLAT NO. 7" AS RECORDED IN PLAT BOOK 43 AT PAGE 184 OF THE PUBLIC RECORDS OF PALM BEACH COUNTY, FLORIDA. (THE BEARING OF THE CENTERLINE OF MEED DRIVE NORTH IS WEST).
- 2) ■ INDICATES P.R.M. (PERMANENT REFERENCE MONUMENT)
- 3) ● INDICATES P.C.P. (PERMANENT CONTROL POINT)
- 4) () DENOTES BOUNDARY DATA CALCULATED FROM A FIELD SURVEY OF THE SUBJECT PROPERTY.
- 5) D.E. WHERE SHOWN INDICATES DRAINAGE EASEMENT.
- 6) U.E. WHERE SHOWN INDICATES UTILITY EASEMENT.
- 7) NO BUILDINGS OR ANY KIND OF CONSTRUCTION SHALL BE PLACED ON UTILITY OR DRAINAGE EASEMENTS.
- 8) NO STRUCTURES, TREES OR SHRUBS SHALL BE PLACED ON DRAINAGE EASEMENTS.
- 9) APPROVAL OF LANDSCAPING ON UTILITY EASEMENTS OTHER THAN WATER AND SEWER SHALL BE ONLY WITH THE APPROVAL OF ALL UTILITIES OCCUPYING SAME.
- 10) NO BUILDINGS OR ANY KIND OF CONSTRUCTION, TREES OR SHRUBS, JUNCTION OR SWITCH BOXES, OR OTHER EXTRUSIONS OF ANY KIND SHALL BE PLACED WITHIN THE 20 FOOT MAINTENANCE EASEMENT.
- 11) UTILITY LINES OR CONDUIT PLACED IN THE UTILITY EASEMENT WITHIN THE MAINTENANCE EASEMENT SHALL BE BURIED A MINIMUM OF FOUR (4) FEET UNDER THE GRADE ELEVATION AS SHOWN ON THE APPROVED CONSTRUCTION PLANS.

ADDITIONAL COURSE TABLE

#1	R-150.00 DELTA-01°53'36" A-4.96
#2	N-29°37'46" W RADIAL (END OF CURVE)
#3	N-22°18'51" E 30.82'
#4	N-15°44'34" W 5.11
#5	R-113.50 DELTA-11°25'39" A-22.64
#6	R-113.50 DELTA-08°42'00" A-13.27
#7	R-113.50 DELTA-11°25'39" A-22.64
#8	R-113.50 DELTA-11°25'39" A-22.64
#9	S-15°44'34" E 5.02'
#10	S-52°51'18" E 30.95'
#11	R-150.00 DELTA-18°36'54" A-95.64'
#12	N-02°07'40" W RADIAL (START OF CURVE)
#13	R-150.00 DELTA-13°53'12" A-36.96'
#14	R-150.00 DELTA-02°09'03" A-5.66'

#13	N-22°22'24" W 50.96'
#14	N-89°59'51" W 22.47'
#15	N-73°17'37" W 22.87'

THE VILLAS OF WILLOW BEND
PLAT NO. 7
PLAT BOOK 43 PAGE 184

PLAT OF THE VILLAS
OF WILLOW BEND
PLAT BOOK 42 PAGE 96

0396-306

46/114

SHEET 2 OF 2 SHEETS

PREPARED BY
Craven-Thompson & Associates, Inc.
SURVEYORS ENGINEERS PLANNERS ARCHITECTS

101 N.W. 31st AVENUE FORT LAUDERDALE, FLORIDA 33309
DATE: JULY 1983 DRAWN BY: J.H. FITSCHEN

The GARDEN OF Willow BEND